




AMETEK PRODUCT REPRESENTATION:






Turbine Sensors

- Cables, Thermocouples, Flamesensor Products


		
THERMOCOUPLES <i>Spare parts and complete kits available for both aeroderivative and industrial frame turbines. Replace rigid harnesses with single probes for reduced cost of ownership – upgrade to the latest hermetic designs on the market.</i>	CABLE AND HARNESSSES <i>Spare parts and complete 'on' and 'off' engine cable kits to meet your overhaul and maintainability needs. Many models for your aeroderivative and industrial frame turbine applications.</i>	FLAME SENSORS <i>Eliminate false turbine trips by upgrading from under-performing or old-style tube type sensors with AMETEK's ruggedized, solid-state, high output UV sensor.</i>



- Nuclear Pressure Transmitters
- Industrial Pressure Transmitters


		
INDUSTRIAL PRESSURE PRODUCTS <i>Fast response pressure transmitters for critical compressor control and fuel applications. Absolute, gage and differential.</i>	NUCLEAR PRODUCTS <i>Qualified for safety related service. Submersible, custom calibration, custom temperature compensation.</i>	MUD DENSITY SENSOR <i>Drilling mud density monitor. Real time 4-20 mA signal output. Submersible design provides highly accurate, high reliability measurement.</i>





SEQUENCE OF EVENTS RECORDERS

Quick diagnosis of high speed events, 1 msec time stamp across all inputs, Web-based alarm notification.

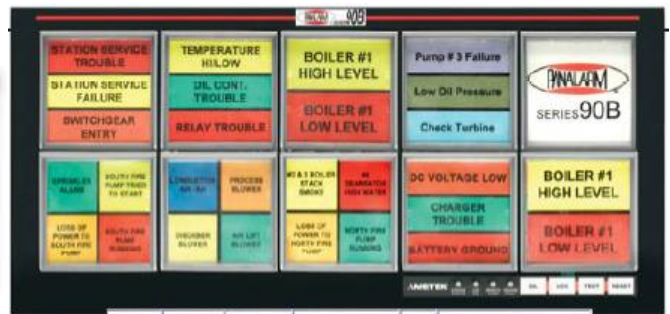


ANNUNCIATORS

Quick visual alarm display and audible notification. Reliable and simple with a modular, flexible configuration.

Panalarm Annunciators

- 910, Series 100, Series 90A L/C, Series 90A Remote Logic, Series 90A, Series 90B




SER Products


- **SERnet**







SEQUENCE OF EVENTS RECORDERS
Quick diagnosis of high speed events, 1 msec time stamp across all inputs, Web-based alarm notification.



ANNUNCIATORS
Quick visual alarm display and audible notification. Reliable and simple with a modular, flexible configuration.

RIS Power Transducers

- Utility Transducers, Power Transducers, DPMS, DPMS-PM



Signal Conditioning

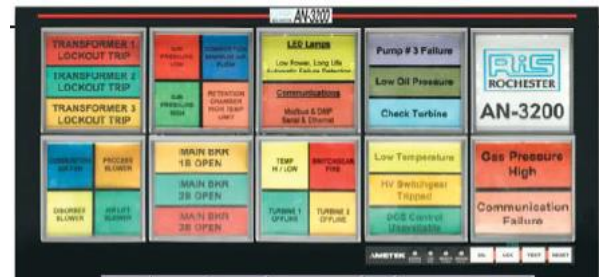
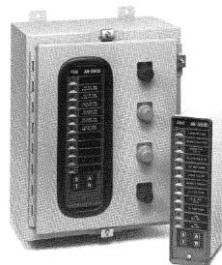
- ET-1200, SC-1300, SC-2300, SC-4300, SC-7400





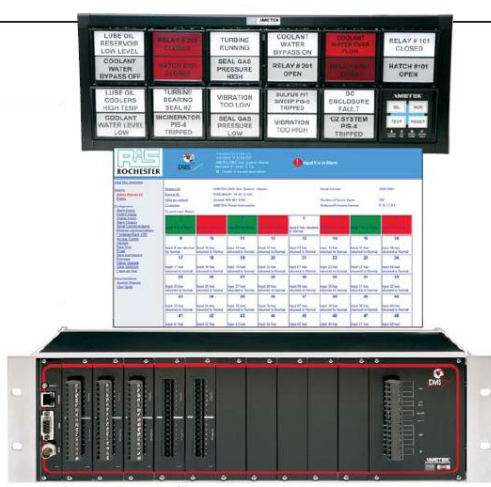
RIS Annunciators

- o SM100, AN3196, AN-6100C, AN6150, AN3100D, AN3200



SER Products

- o ISM-1, ISM-SX, DMS3K, SERnet





Recorder Products

- TR-3000

Ametek TR-3000



Advanced Multifunction Recorder



- Diagnostics to the IM level built into Display Station

Transient Recorder Input Modules Status

Channel Group: IM1 to IM9

SCM: Firmware and FPGA versions: 00.00.33, 00.00.8

Input Modules Lock Status: LOCKED

Input Modules Status	Ans/Digs	IP Address	Serial No.	Last Calibration Date	Firmware, FPGA versions	Ping	Online	Valid Cfg	Comms	EEPROM
IM1:	6A, 12D	42.42.42.11	TR3KSerial0	01/01/1970-00:00:00	00.00.14, 00.00.11	Status: true	true	true	true	true
IM2:						Status:				
IM3:	6A, 12D	42.42.42.13	TR3KSerial3	01/01/1970-00:00:00	00.00.14, 00.00.11	Status: true	true	true	true	true
IM4:						Status:				
IM5:	6A, 12D	42.42.42.15	TR3KSerial5	01/01/1970-00:00:00	00.00.14, 00.00.11	Status: true	true	true	true	true
IM6:						Status:				
IM7:						Status:				
IM8:						Status:				
IM9:						Status:				

Buttons: Lock/Unlock System, Save Input Module Setup, Close

SCIENTIFIC COLUMBUS

Transducers

- Digilogic, Exceltronic, XLG, XLP, DPMS, DPMS-PM



Exceltronic



Digilogic



Also available in XLP modular, plug-in format for limited-space applications requiring large numbers of transducers.

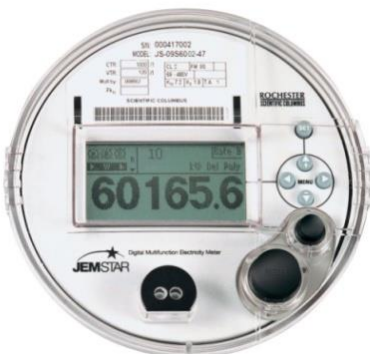
- ◆ Up to six transducers in one module
- ◆ Two, four, or eight modules in one enclosure
- ◆ Easy to install, expand, or repair
- ◆ Convenient front-panel access for calibration and output-current jacks available

See pages 77-94 for more information.



Meters Products

- JEMStar, Ci20, JEMRead software, JEMWare software



SCIENTIFIC COLUMBUS

Meters Products (Continued)

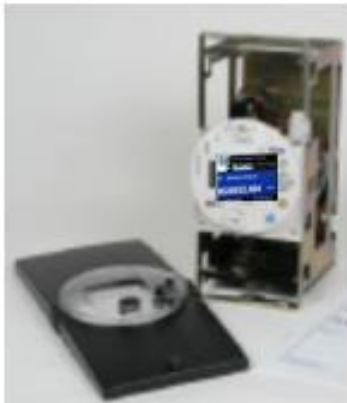
- o JEMStar II, JEMWare II Software



Socket



Switchboard



Retrofits

Single Register Display



Triple Register Display



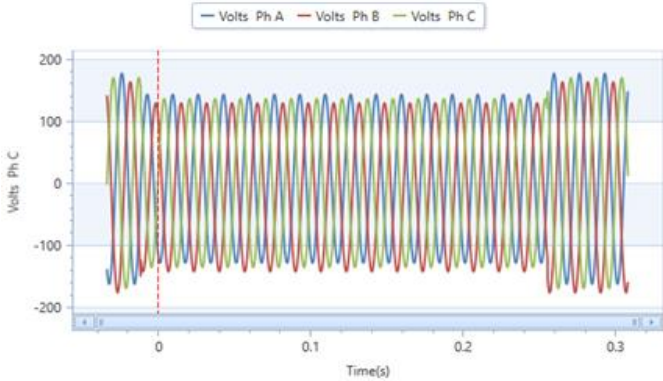
Dual Register Display



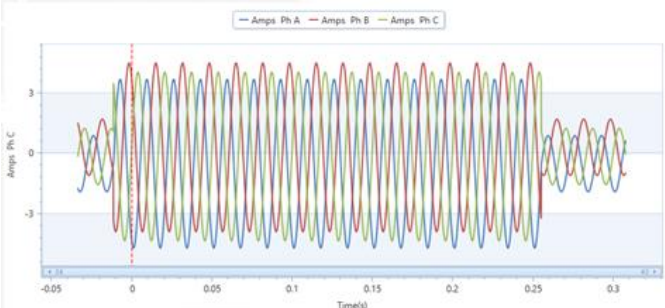
Quad Register Display



Power Quality Display with JEMWare II



Waveform Capture Plot in JEMWARE - Phase ABC Voltage Sag



Waveform Capture Plot in JEMWARE - Phase ABC Current from above Voltage Sag



COMMUNICATION PRODUCTS

T1/E1 Multiplexers combine data, voice and protective relay channels together in one system for use over direct fiber optics or via higher order multiplexers.



POWER LINE CARRIER

Next generation UPLC for every type of pilot relaying and direct tripping scheme. Uses the power line itself for the communication path between line ends.



Narrowband Power-Line Carrier for Protective Relay Applications

NEW PRODUCT ANNOUNCEMENT

1-RU PLC HYBRIDS DOCUMENT NUMBER: C045-16004a

